



Aged Care
Planning Regions
displaying
Statistical Areas
Level 2 (SA2s)



Logan River Valley
Queensland

Map 1 of 2

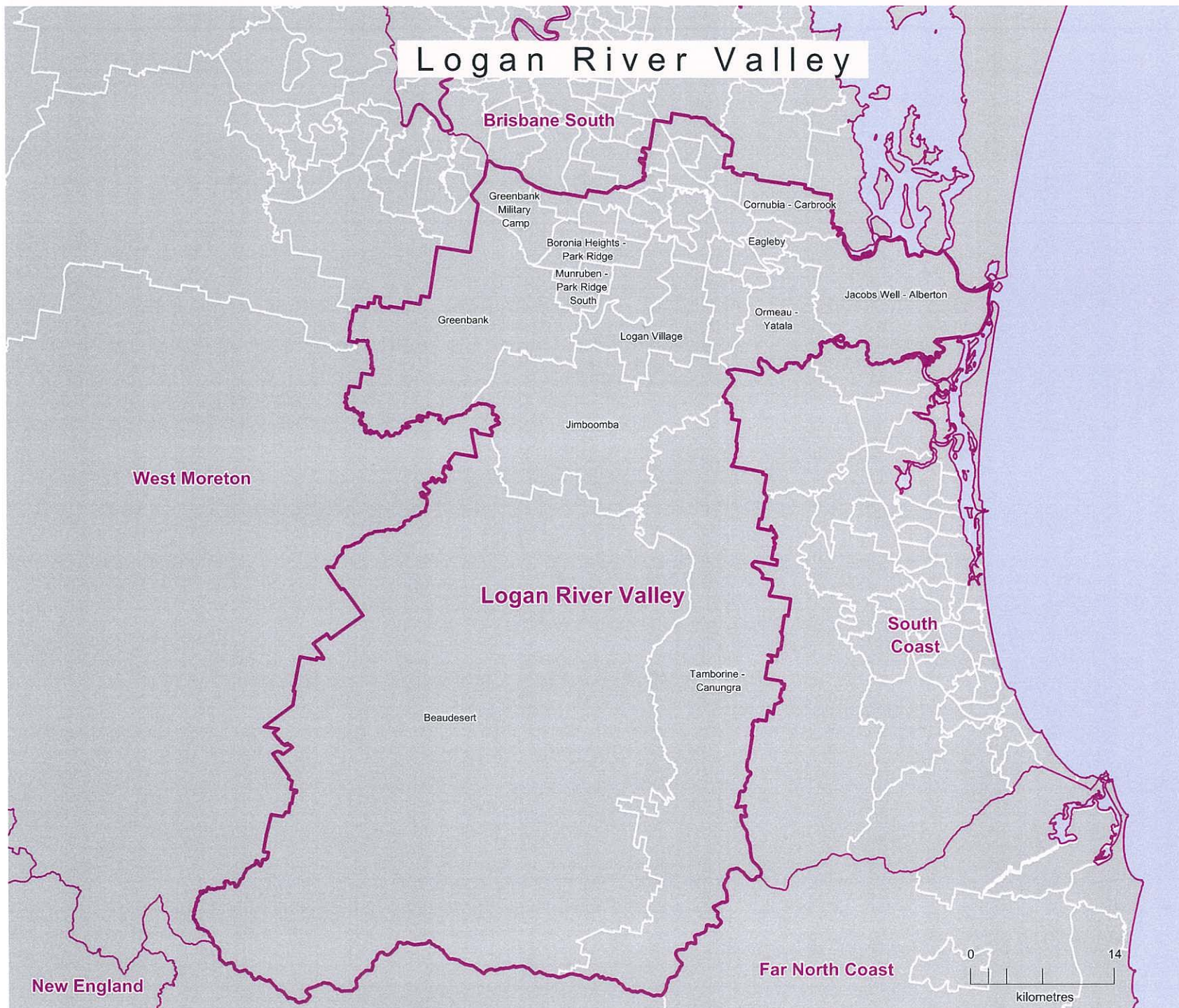
The Aged Care Planning Region boundaries displayed became effective in February 2015. They are based on Statistical Area Level 2 (SA2) boundaries from the Australian Bureau of Statistics Australian Statistical Geography Standard (ASGS) 2011.



Legend

-  Aged Care Planning Region 2015
-  Statistical Area Level 2 (SA2)

This map has been produced to be viewed as
A3 - Landscape.





Australian Government

Department of Social Services

Aged Care Planning Regions displaying Statistical Areas Level 2 (SA2s)



Logan River Valley Queensland

Map 2 of 2

The Aged Care Planning Region boundaries displayed became effective in February 2015. They are based on Statistical Area Level 2 (SA2) boundaries from the Australian Bureau of Statistics Australian Statistical Geography Standard (ASGS) 2011.



Legend

-  Aged Care Planning Region 2015
-  Statistical Area Level 2 (SA2)

This map has been produced to be viewed as A3 - Landscape.

